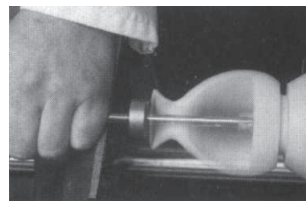




By selecting Robert Sorby tools, you have chosen amongst the finest in the world. Manufactured by craftsmen using skills handed down through generations. These tools have been specifically designed to facilitate the turning of hollow forms and vessels.



**Boring Bar and Depth Stop**

The boring tool is used to remove the centre of the hollow vessel or bowl to an accurate depth. The depth stop limits the depth of cut to prevent the risk of cutting through the bottom of the project. The tool should be presented to the work horizontally and cut on centre line.

The boring bar is sharpened by rubbing a diamond file on the two cutting edges.

**Hollowing Tools**

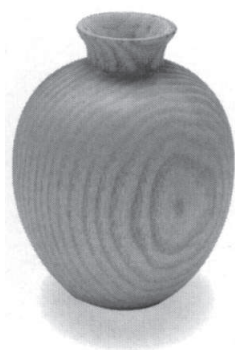
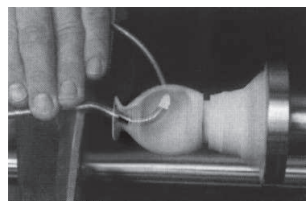
There are two types of Robert Sorby hollowing tools, one type is made from solid high speed steel. The other features high speed steel tips that can be set to any position, making them very versatile. There are various sizes available to suit projects the size of small tagua nuts through to massive sculptural turnings.

All swan necked hollowing tools should be used with the straight section of the shank on the tool rest.

At no time should the swan necked section of the tool come into contact with the rest.

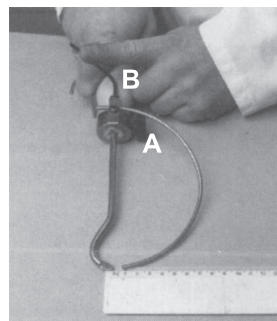
If these tools have any part of the swan necked section in contact with the tool rest during the cut, the control line of the tool shifts and they will be uncontrollable.

These tools cut on the centre line of the work. Throughout which the tools are held horizontal. For a more gentle cut rotate the tool until the tip trails around the 8 o'clock position. Make a series of light cuts starting from the top of the work and working towards the bottom. We recommend that these tools are honed with a diamond file on the bevel. If the tip is severely damaged it may be necessary to re-profile the tip on a bench grinder.



**Wall Thickness Gauge**

This is a device that makes the turning of hollow vessels within the grasp of even the novice turner, with the added security of knowing you are not going to end up with two pieces instead of one.

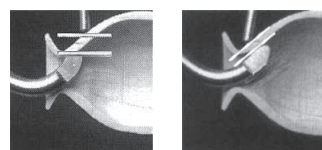


**Setting the Gauge**

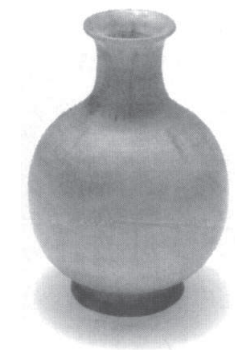
1. Lock on to ferrule with "T" knob (A).
2. Slacken screw (B) with allen key provided.
3. Holding the finger loop in contact with the handle, set to the required gap and retighten the screw (see photo).

This can now be left in position whilst turning if required, and can be swung in and out to check the wall thickness as you turn. If the project is made from an open grained wood such as a burr, it is best to check the wall thickness when the work is stationary.

**N.B.** The wall gauge can be bent if required for any difficult areas. This is sometimes necessary on deep necked hollow vessels (see photos).



Gap incorrect      Gap correct



For further information on these or any other Robert Sorby products please contact us at:

Athol Road, Sheffield. S8 OPA, England.  
 Tel: (0114) 225 0700  
 Fax: (0114) 225 0710  
 E-Mail: sales@robert-sorby.co.uk.  
 Web-site: http://www.robert-sorby.co.uk.

Robert Sorby are the world's premier manufacturer of quality wood turning tools. Our full colour catalogue gives details of the extensive range of products available. Amongst these is a unique collection of tools specifically designed to enable the turner to create a wealth of different hollow forms. The following guidelines will assist you in making the most from these tools.

**Work Preparation**

- Profile the external shape of the work.
- Ensure there is enough support at the bottom of the work to withstand the hollowing process.

**Tool Presentation**

- Cutting occurs on centre.
- For a gentler cut rotate the tool until the tip trails up to 15° off horizontal.
- Tool must be horizontal at all times.

**Special note for swan neck hollowing tools**

- Only the straight section of the shank should be in contact with the tool rest - never the swan neck, as this will result in a catch.

**Sharpening**

- For regular maintenance hone cutting edge round the original shape - or across the flat to achieve a finer finish.
- When serious damage has occurred sharpen to the original profile on a suitable grinding system.

Code	Description	Miniumum Aperture Size	Maximum Project Size	Applications	Replacement Cutter Code
<b>STRAIGHT HOLLOWING TOOLS</b>					
8801H	20" PROBE	1/2" / 13MM	5 1/2" / 140MM	BOWL & END GRAIN	815C
8802H	24" PROBE	5/8" / 16MM	7" / 176MM	BOWL & END GRAIN	RS232C & RS233C
8803H	28" ARTICULATED PROBE	1" / 25MM	9" / 229MM	BOWL & END GRAIN	RS211C, RS212C, RS213C
RS213	14" ARTICULATED PROBE FOR RS2000 SYSTEM	1" / 25MM	9" / 229MM	BOWL & END GRAIN	RS211C, RS212C, RS213C
RS200KT	MULTI-TIP HOLLOWING TOOL	1" / 25MM	5 1/4" / 133MM	BOWL & END GRAIN	RS211C, RS212C, RS200C
RS2007KT	38" MULTI-TIP HOLLOWING TOOL	1" / 25MM	12" / 304MM	BOWL & END GRAIN	RS211C, RS212C, RS200C
RS2008KT	38" MULTI-TIP HOLLOWING TOOL RUBBER GRIP	1" / 25MM	12" / 304MM	BOWL & END GRAIN	RS211C, RS212C, RS200C
<b>SWAN NECK HOLLOWING TOOLS</b>					
873H	MICRO HOLLOWING TOOL	5 / 16" / 8MM	2 1/2" / 64MM	END GRAIN	SOLID HSS
850H	14" SHALLOW HOLLOWING TOOL	3 / 8" / 10MM	3 1/2" / 89MM	END GRAIN	SOLID HSS
85 1H	14" MEDIUM HOLLOWING TOOL	1/2" / 13MM	4 1/2" / 115MM	END GRAIN	851C
855H	20" HOLLOWING TOOL	1/2" / 13MM	5 1/2" / 140MM	END GRAIN	851C
859H	24" HOLLOWING TOOL	5/8" / 16MM	7" / 176MM	BOWL & END GRAIN	RS232C & RS233C
RS210	HOOKER FOR RS2000 SYSTEM	1" / 25MM	9" / 229MM	BOWL & END GRAIN	RS211C, RS212C, RS200C
8587XXLH	HOLLOWING TOOL	1" / 25MM	12" / 304MM	BOWL & END GRAIN	RS211C, RS212C, RS200C

For further information on these or any other Robert Sorby products please contact us at:

Athol Road, Sheffield. S8 OPA, England.  
 Tel: (0114) 225 0700  
 Fax: (0114) 225 0710  
 E-Mail: sales@robert-sorby.co.uk.  
 Web-site: http://www.robert-sorby.co.uk.